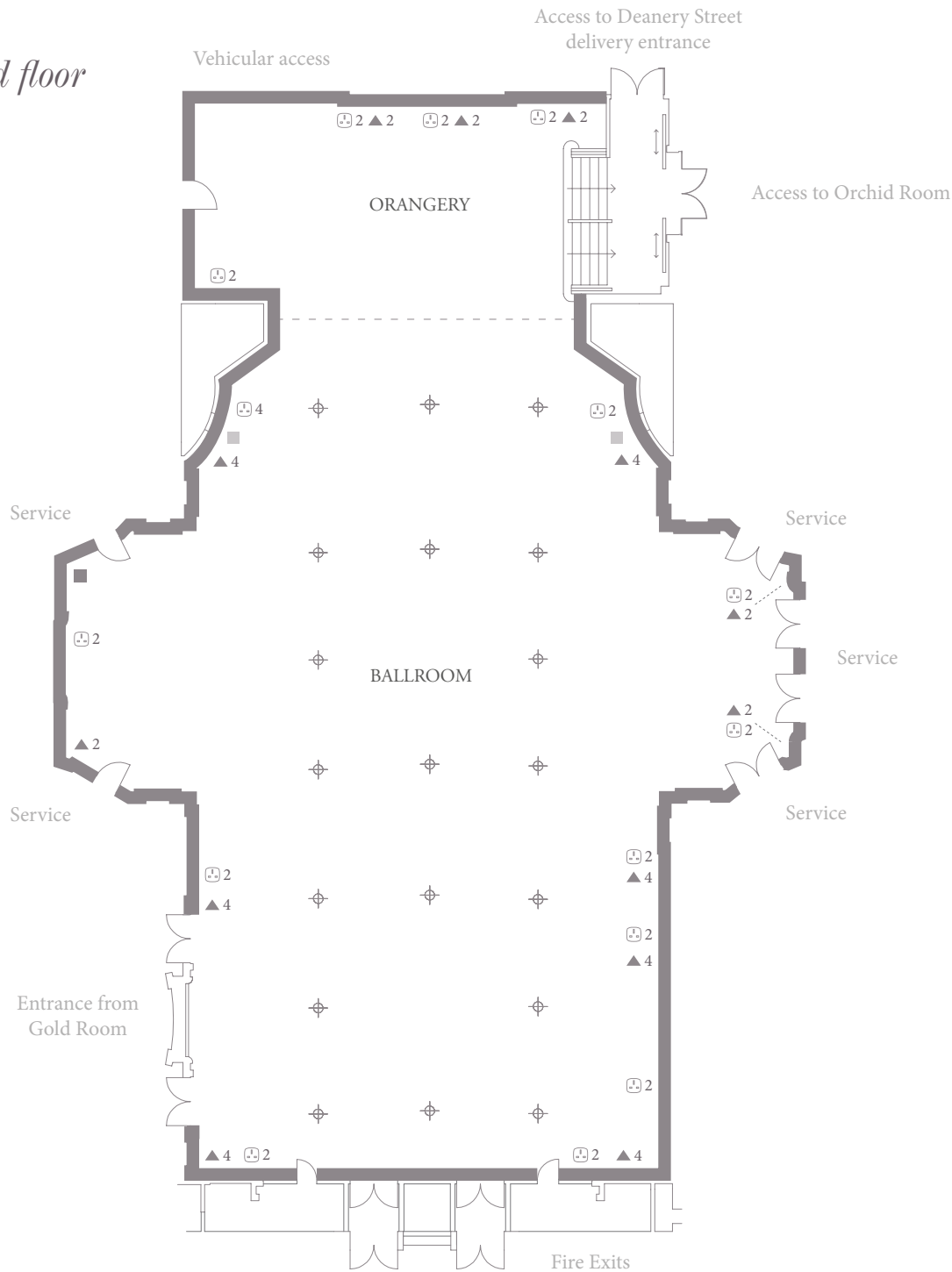


The Dorchester

Ballroom - ground floor



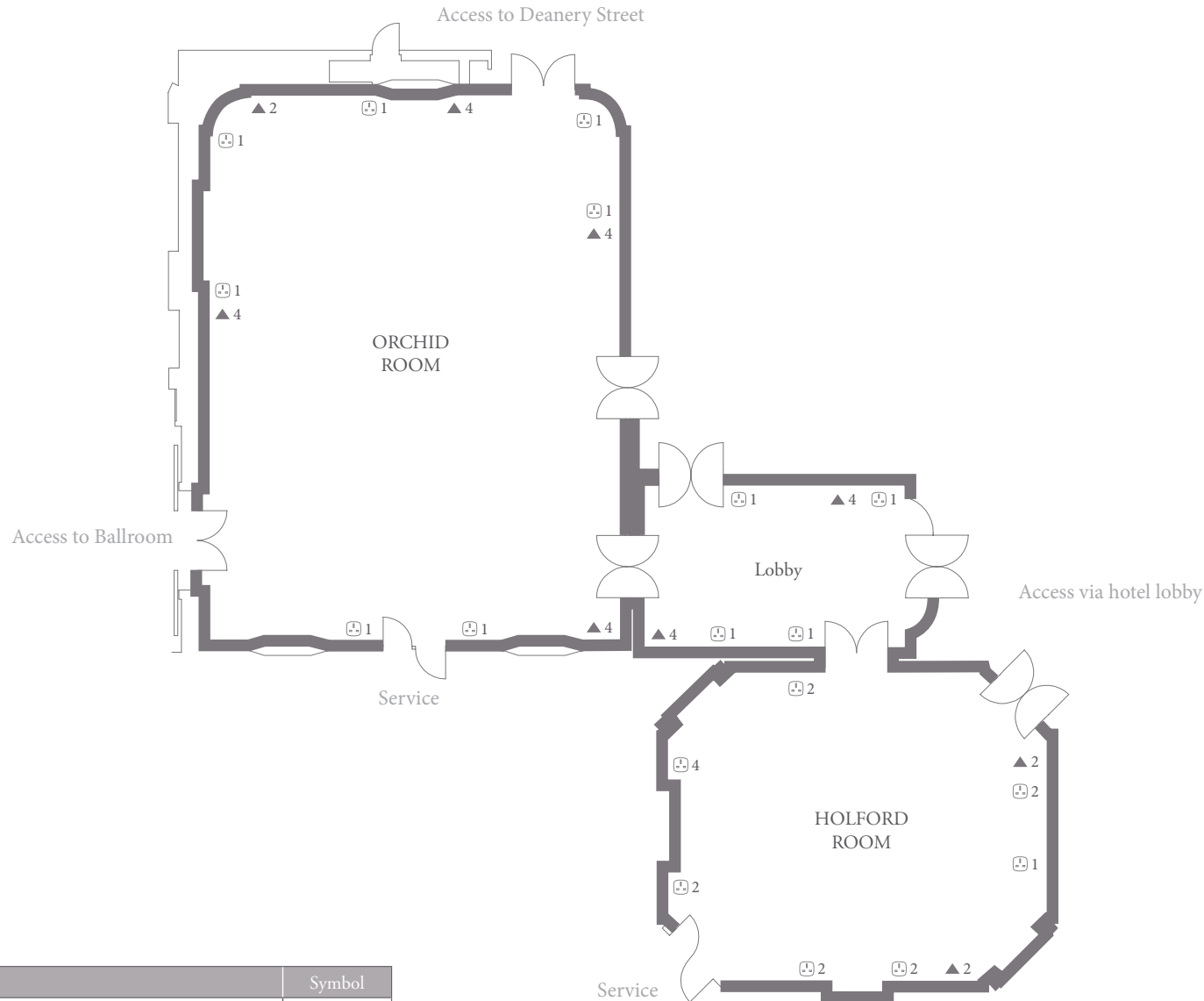
BALLROOM	Metric	Imperial
Area	783 sq m	8417 sq ft
Ceiling height (highest)	5.3m	17' 4"
Ceiling height (lowest)	4.8m	15' 8"
Length (maximum)	34m	111' 6"
Width (maximum)	23m	75' 5"

Capacities	Maximum
Breakfast	510
Cabaret	240
Classroom	300
Cocktails	1000
Dinner	510
Dinner dance	432
Hollow square	120
Lunch	510
Theatre	400
U-shape	100

Key	Symbol
Cat 5 / IP / ISDN	▲
Power Socket	⊞
3 Phase Power 125A	■
3 Phase Power 32A	■
Rig point	⊕

The Dorchester

Holford and Orchid Rooms - ground floor



Key	Symbol
Power Socket	Ⓜ
Cat 5 / IP / ISDN	▲

HOLFORD ROOM	Metric	Imperial
Area	81 sq m	871 sq ft
Ceiling height (highest)	4.3m	14' 1"
Ceiling height (lowest)	4m	13' 1"
Length (maximum)	9.8m	32' 2"
Width (maximum)	8.3m	27' 2"

Capacities	Maximum
Breakfast	60
Boardroom	26
Cabaret	40
Classroom	30
Cocktails	100
Dinner	60
Dinner dance	-
Hollow square	36
Lunch	60
Theatre	50
U-shape	30

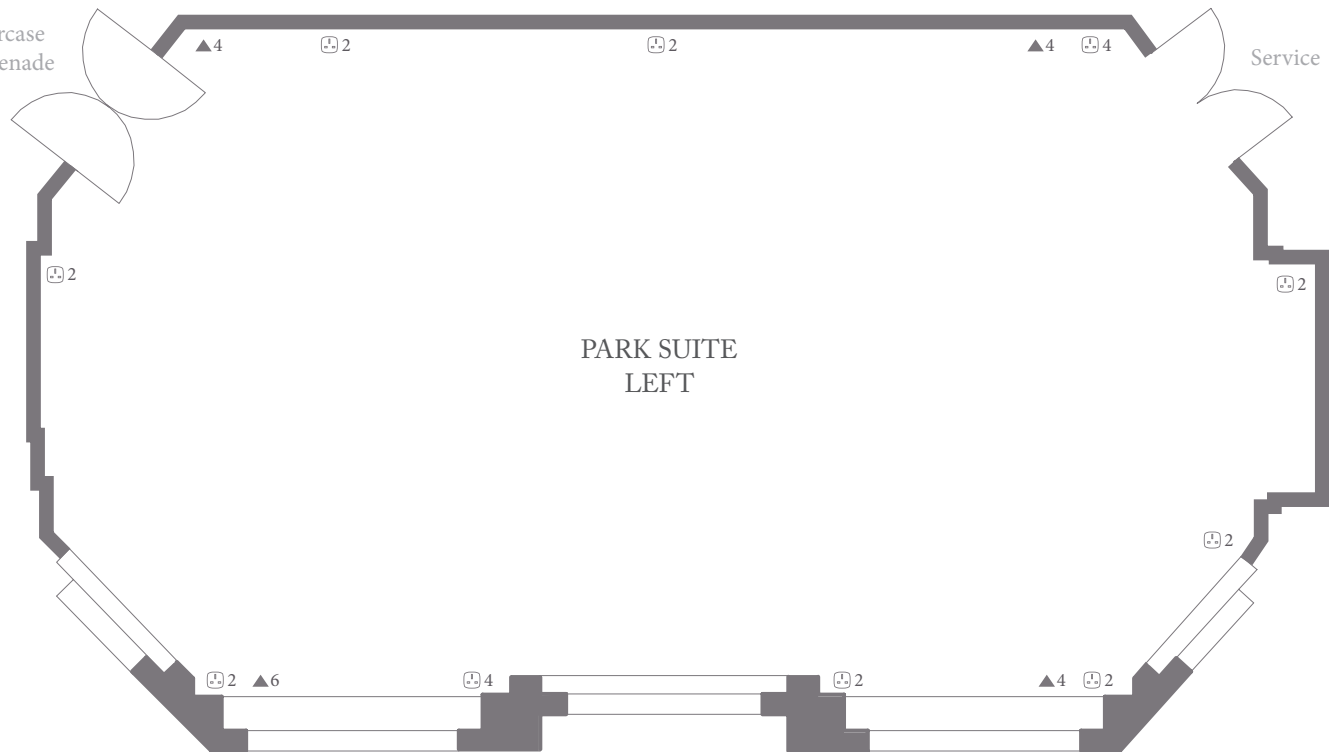
ORCHID ROOM	Metric	Imperial
Area	159 sq m	1711 sq ft
Ceiling height (highest)	3.88m	12' 8"
Ceiling height (lowest)	3.58m	11' 8"
Length (maximum)	14.5m	47' 6"
Width (maximum)	11m	36' 1"

Capacities	Maximum
Breakfast	144
Boardroom	42
Cabaret	72
Classroom	100
Cocktails	250
Dinner	144
Dinner dance	120
Hollow square	60
Lunch	144
Theatre	120
U-shape	42

The Dorchester

Park Suite Left - mezzanine floor

Access via staircase
from The Promenade



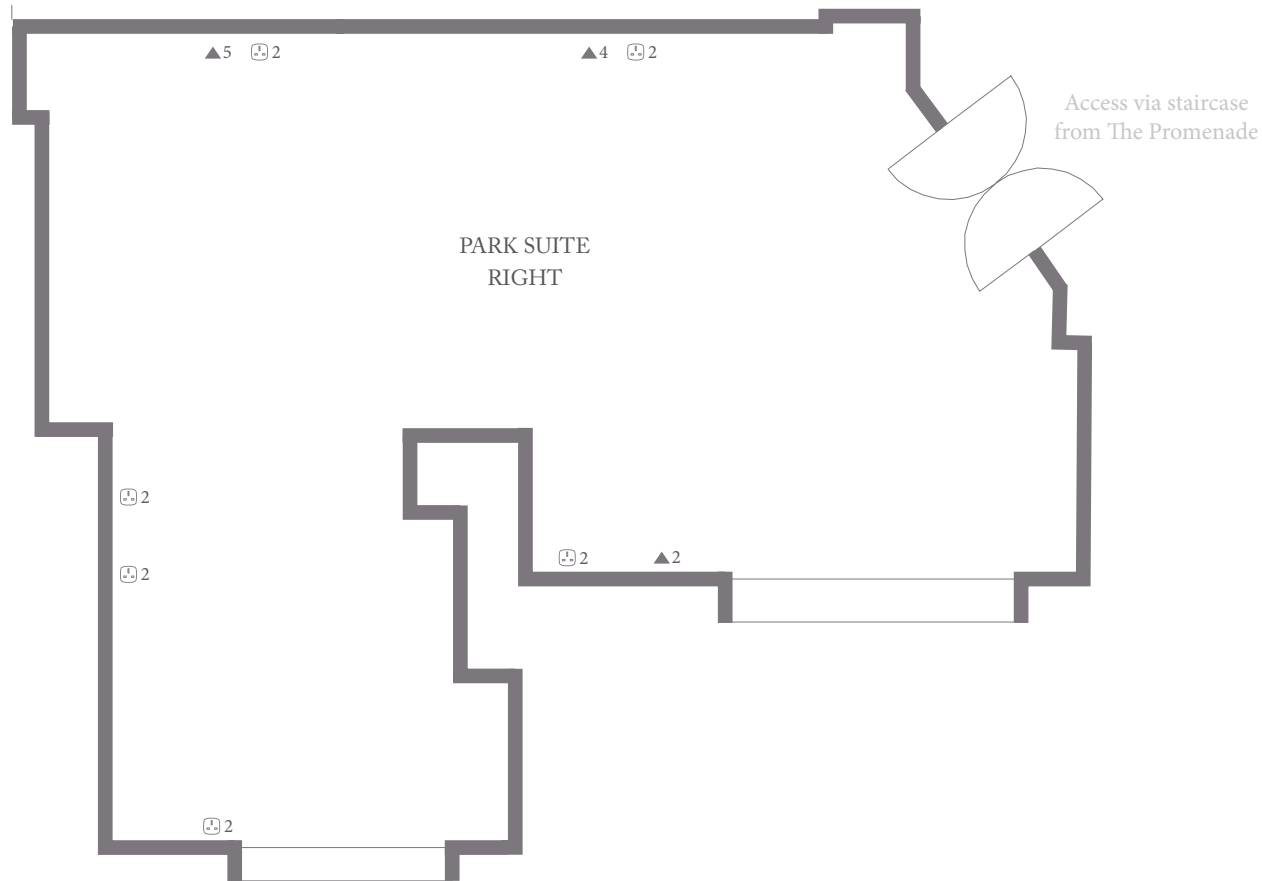
Views of Hyde Park

PARK SUITE LEFT	Metric	Imperial
Area	93 sq m	1001 sq ft
Ceiling height (highest)	2.55m	8' 4"
Ceiling height (lowest)	2.55m	8' 4"
Length (maximum)	13.2m	43' 3"
Width (maximum)	7.1m	23' 3"

Capacities	Maximum
Breakfast	60
Boardroom	36
Cabaret	42
Classroom	50
Cocktails	100
Dinner	60
Dinner dance	50
Hollow square	42
Lunch	60
Theatre	60
U-shape	36

Key	Symbol
Power Socket	☐
Cat 5 / IP / ISDN	▲

The Dorchester
Park Suite Right - mezzanine floor



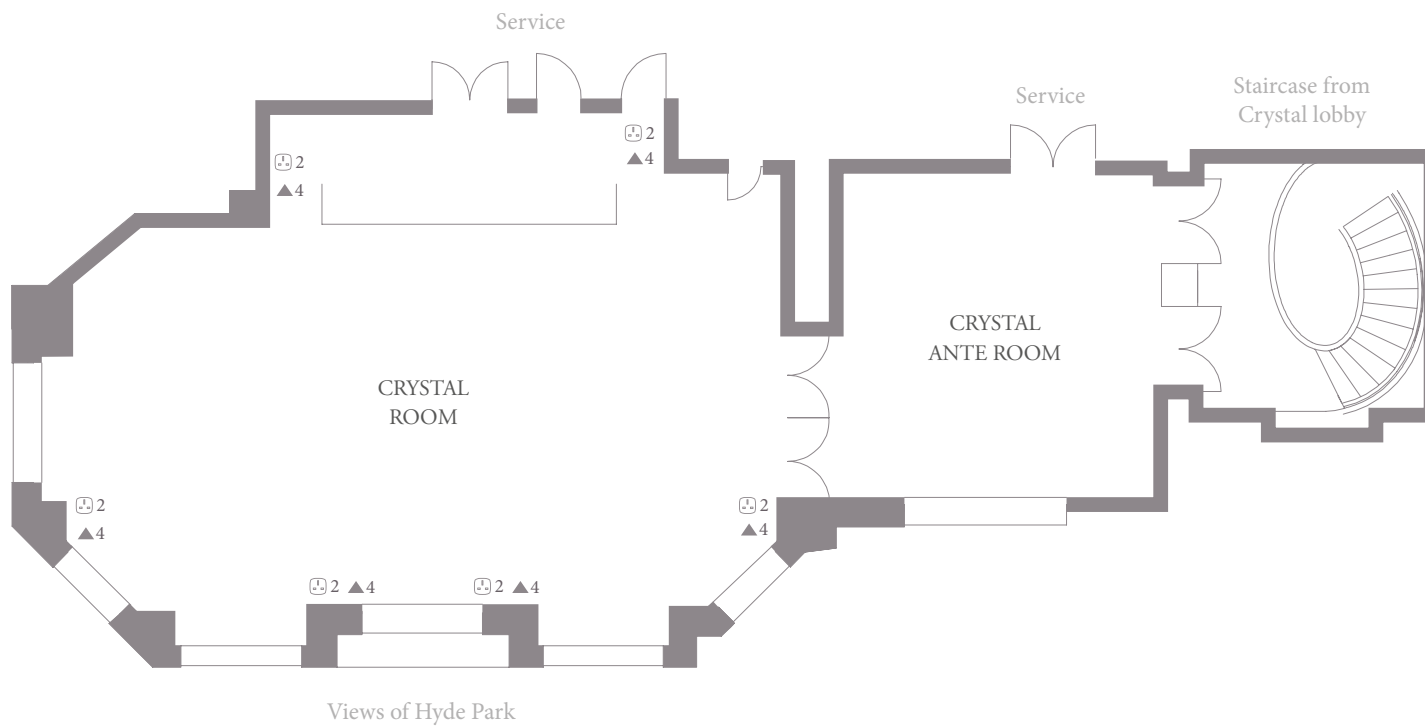
Views of Hyde Park

PARK SUITE RIGHT	Metric	Imperial
Area	76 sq m	818 sq ft
Ceiling height (highest)	2.56m	8' 4"
Ceiling height (lowest)	2.2m	7' 2"
Length (maximum)	9.57m	31' 4"
Width (maximum)	8m	26' 2"

Capacities	Maximum
Breakfast	30
Boardroom	22
Cabaret	-
Classroom	-
Cocktails	60
Dinner	30
Dinner dance	-
Hollow square	-
Lunch	30
Theatre	30
U-shape	-

Key	Symbol
Power Socket	Ⓜ
Cat 5 / IP / ISDN	▲

The Dorchester
Crystal Suite - mezzanine floor



CRYSTAL ROOM	Metric	Imperial
Area	96 sq m	1033 sq ft
Ceiling height (highest)	2.32m	7' 7"
Ceiling height (lowest)	2.12m	6' 11"
Length (maximum)	13.4m	43' 11"
Width (maximum)	7.2m	23' 7"

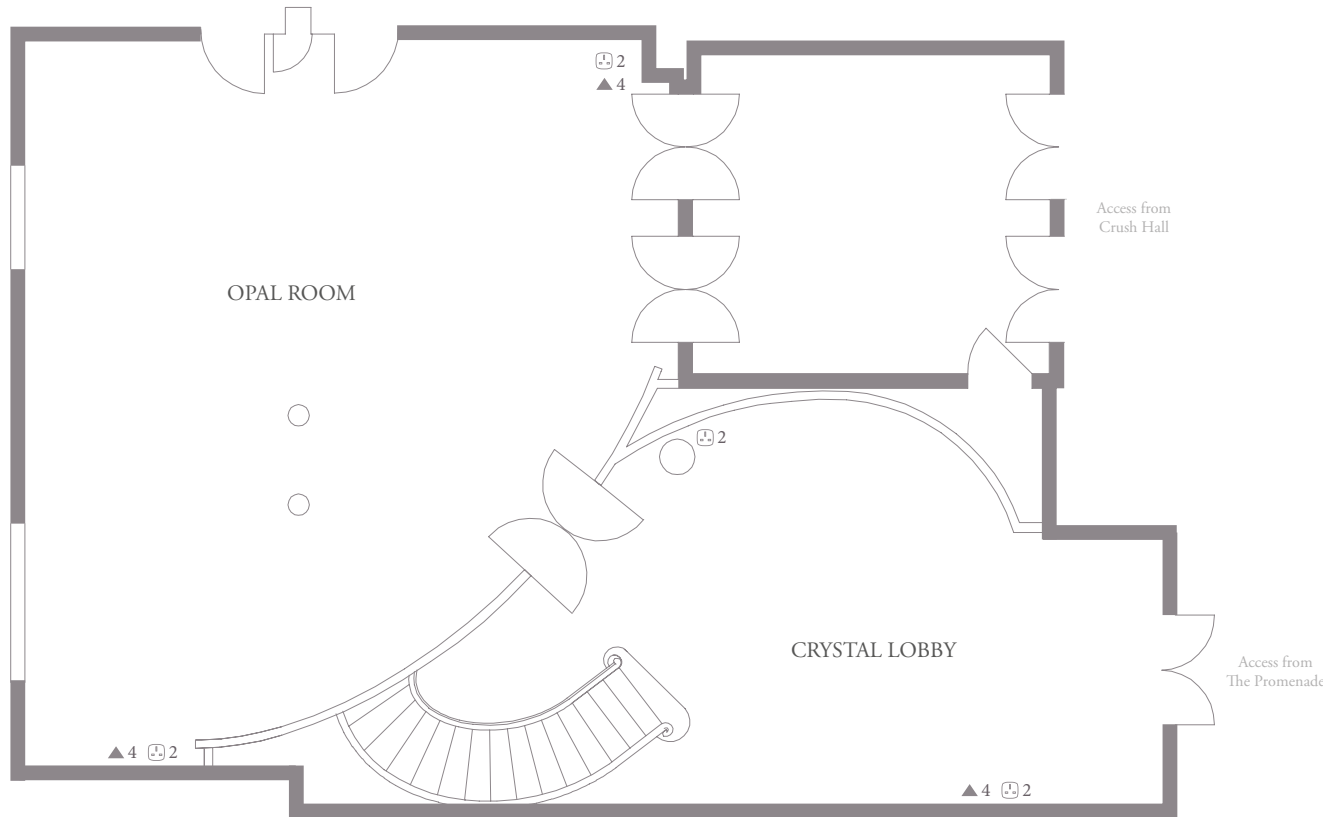
Capacities	Maximum
Breakfast	70
Boardroom	36
Cabaret	42
Classroom	40
Cocktails	120
Dinner	70
Dinner dance	50
Hollow square	42
Lunch	70
Theatre	60
U-shape	36

CRYSTAL ANTE ROOM	Metric	Imperial
Area	40 sq m	430 sq ft
Ceiling height (highest)	2.37m	7' 9"
Ceiling height (lowest)	2.22m	7' 3"
Length (maximum)	7.2m	23' 7"
Width (maximum)	5.57m	18' 3"

Key	Symbol
Power Socket	⊞
Cat 5 / IP / ISDN	▲

The Dorchester

Opal and Crystal Room



OPAL ROOM	Metric	Imperial
Area	60 sq m	645 sq ft
Ceiling height (highest)	tba	tba
Ceiling height (lowest)	tba	tba
Length (maximum)	10.42m	34' 2"
Width (maximum)	9.31m	30' 6"

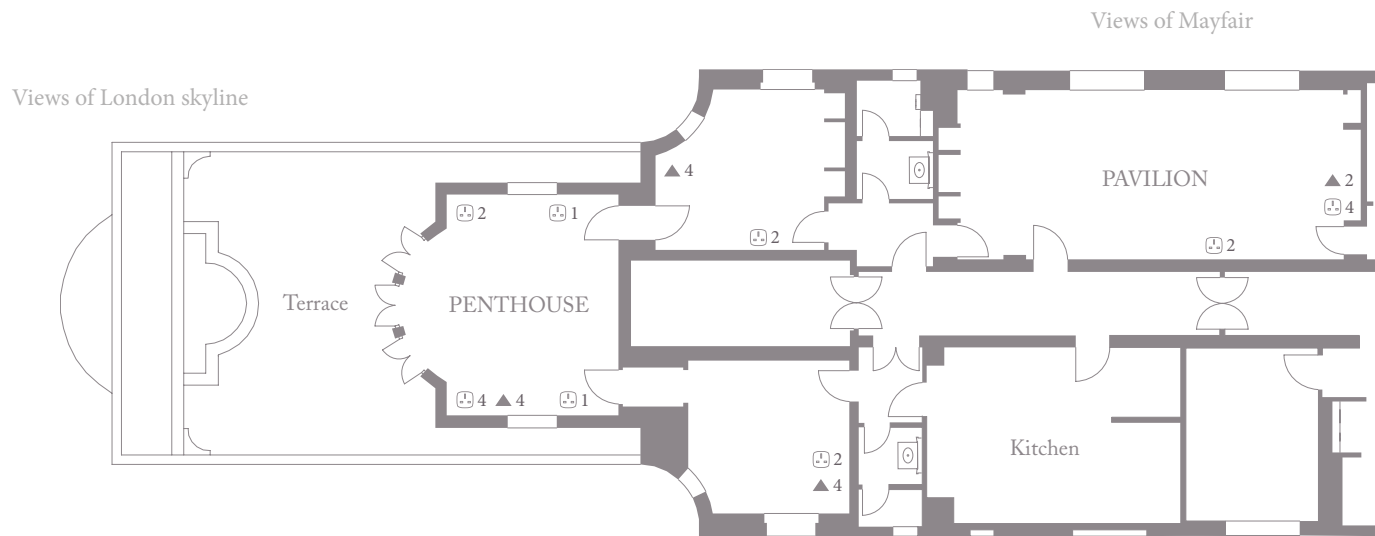
Capacities	Maximum
Breakfast	30
Boardroom	20
Cabaret	-
Classroom	-
Cocktails	80
Dinner	30
Hollow square	-
Lunch	30
Theatre	40
U-shape	-

CRYSTAL LOBBY	Metric	Imperial
Useful Area	33 sq m	355 sq ft
Ceiling height (highest)	tba	tba
Ceiling height (lowest)	tba	tba
Useful Length	5.86m	19' 2"
Width (maximum)	5.79m	18' 11"

Key	Symbol
Power Socket	Ⓜ
Cat 5 / IP / ISDN	▲

The Dorchester

Penthouse & Pavilion - eighth floor



The lifts are along the corridor and connect to the hotel lobby

Key	Symbol
Power Socket	⊞
Cat 5 / IP / ISDN	▲

PENTHOUSE	Metric	Imperial
Area	27 sq m	290 sq ft
Ceiling height (highest)	2.49m	8' 2"
Ceiling height (lowest)	2.49m	8' 2"
Length (maximum)	5.9m	19' 4"
Width (maximum)	4.6m	15' 1"

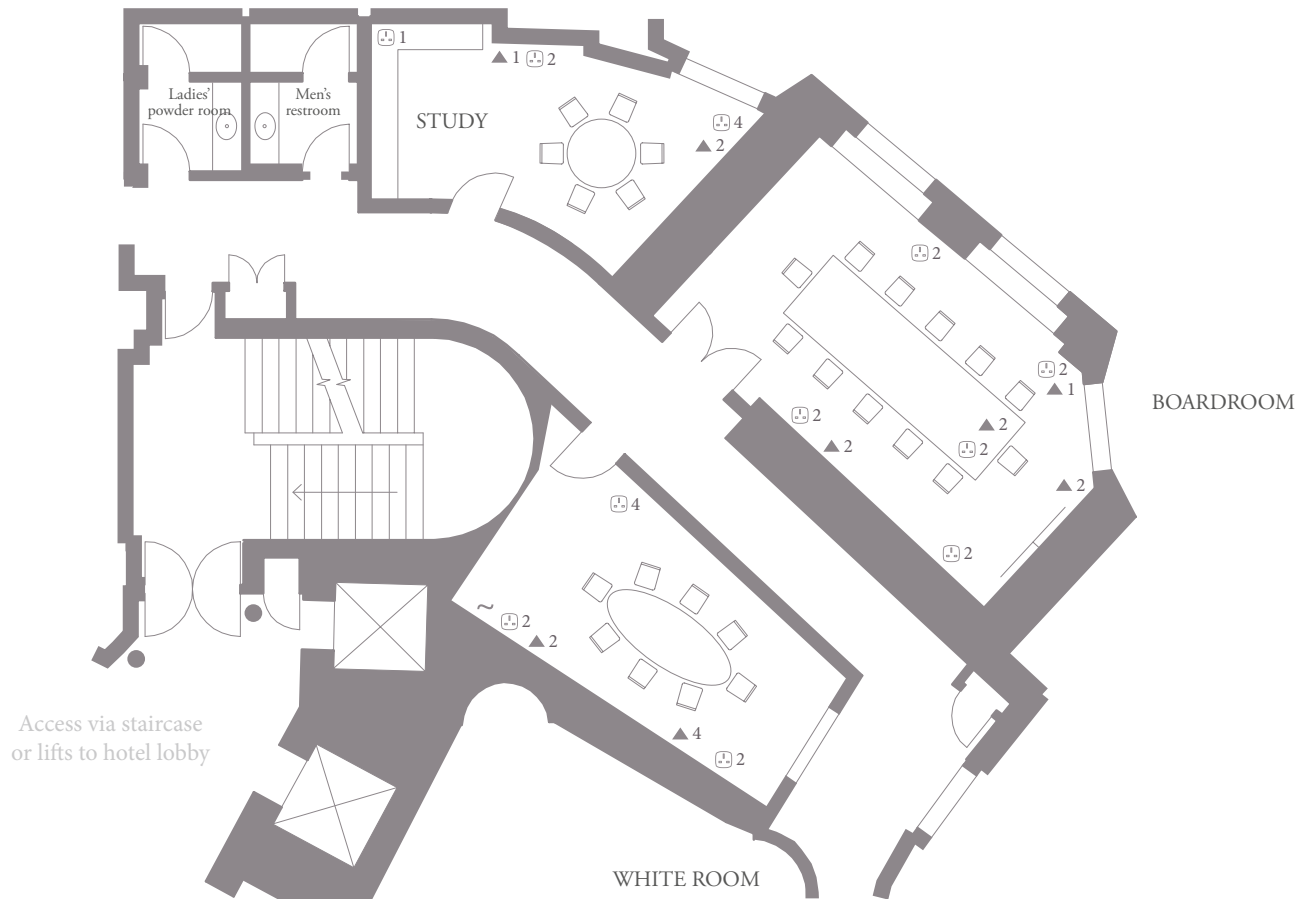
Capacities	Maximum
Breakfast	18
Boardroom	16
Cabaret	-
Classroom	-
Cocktails	40
Dinner	18
Dinner dance	-
Hollow square	-
Lunch	18
Theatre	20
U-shape	-

PAVILION	Metric	Imperial
Area	40 sq m	430 sq ft
Ceiling height (highest)	2.8m	9' 2"
Ceiling height (lowest)	2.6m	8' 6"
Length (maximum)	8.9m	29' 2"
Width (maximum)	4.5m	14' 9"

Capacities	Maximum
Breakfast	34
Boardroom	34
Cabaret	-
Classroom	-
Cocktails	60
Dinner	34
Dinner dance	-
Hollow square	-
Lunch	34
Theatre	40
U-shape	-

The Dorchester

Business Suite – mezzanine floor



Key	Symbol
Power Socket	⊕
Cat 5 / IP / ISDN	▲
VGA	~

BOARDROOM	Metric	Imperial
Area	28 sq m	301 sq ft
Ceiling height (highest)	2.26m	7' 4"
Ceiling height (lowest)	2.26m	7' 4"
Length (maximum)	7.2m	23' 7"
Width (maximum)	4m	13' 1"

Capacities	Maximum
Breakfast	12
Boardroom	12
Dinner	12
Lunch	12

STUDY	Metric	Imperial
Area	16 sq m	172 sq ft
Ceiling height (highest)	2.25m	7' 4"
Ceiling height (lowest)	2.25m	7' 4"
Length (maximum)	5m	16' 4"
Width (maximum)	3.2m	10' 5"

Capacities	Maximum
Breakfast	6
Boardroom	6
Dinner	6
Lunch	6

WHITE ROOM	Metric	Imperial
Area	13 sq m	139 sq ft
Ceiling height (highest)	2.25m	7' 4"
Ceiling height (lowest)	2.25m	7' 4"
Length (maximum)	4.4m	14' 5"
Width (maximum)	3m	9' 10"

Capacities	Maximum
Breakfast	8
Boardroom	8
Dinner	8
Lunch	8