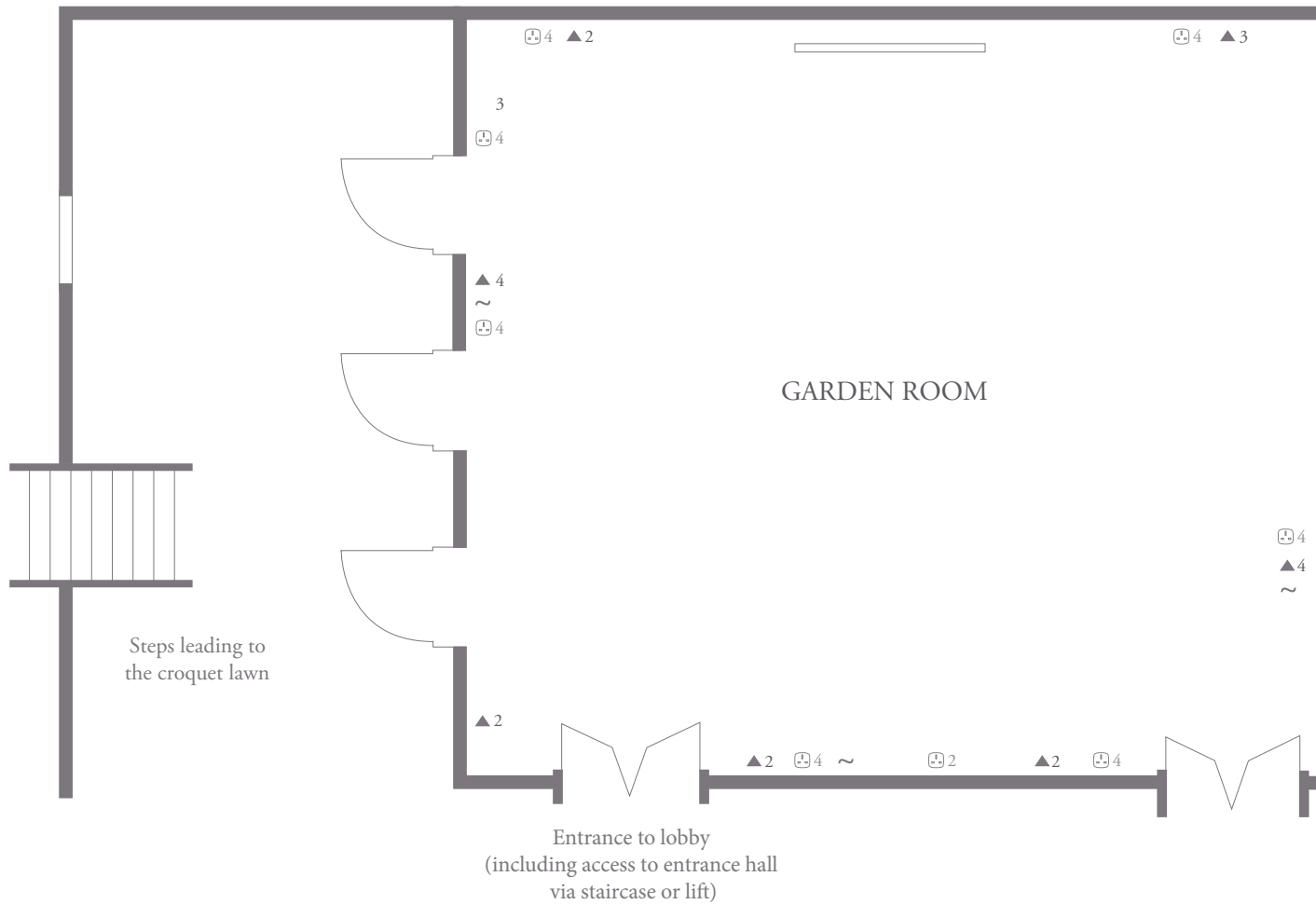


Coworth Park  
*Garden Room*  
*Lower ground floor*

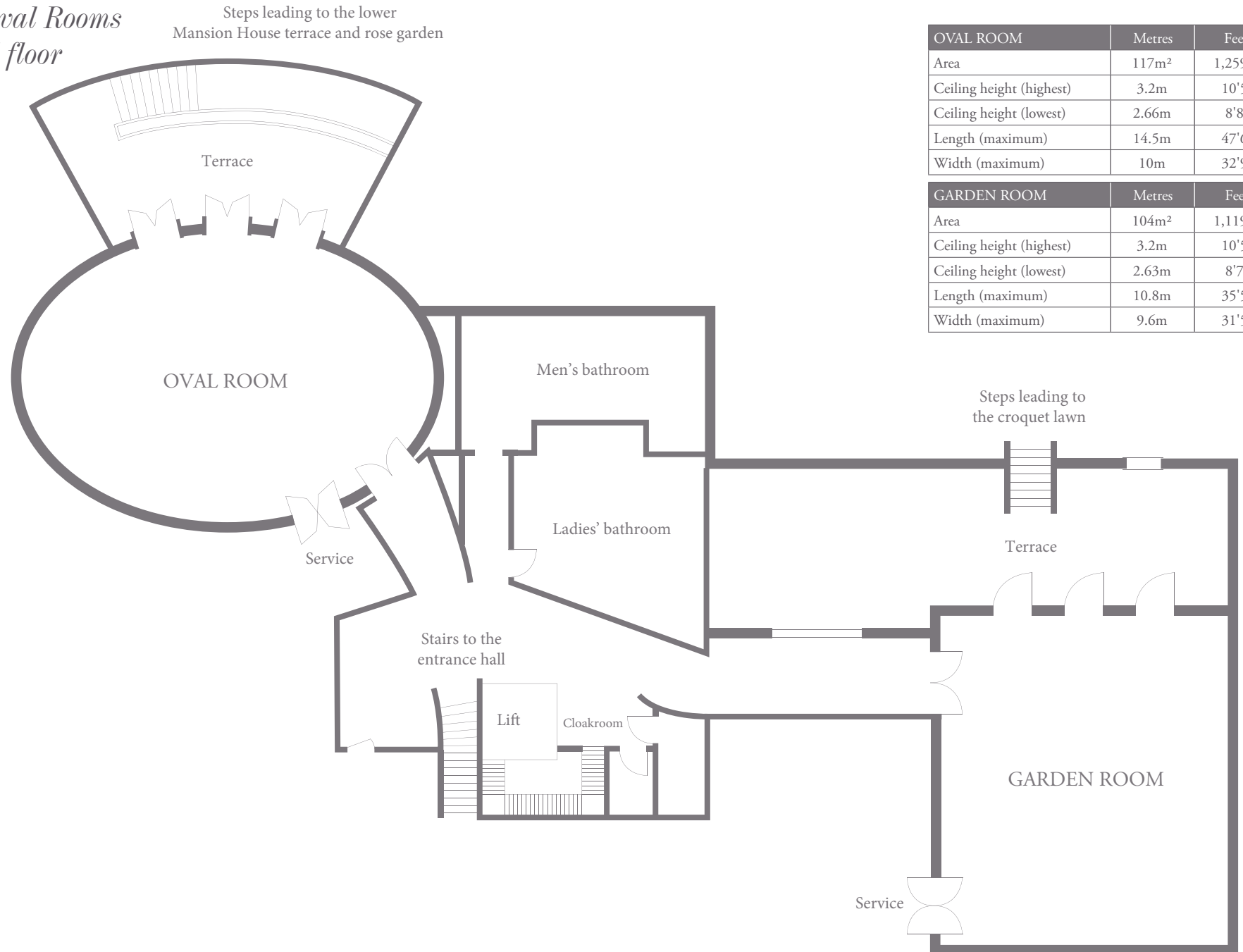


GARDEN ROOM	Metres	Feet
Area	104m <sup>2</sup>	1,119ft <sup>2</sup>
Ceiling height (highest)	3.2m	10'5"
Ceiling height (lowest)	2.63m	8'7"
Length (maximum)	10.8m	35'5"
Width (maximum)	9.6m	31'5"

Capacities	Maximum
Breakfast	80
Boardroom	30
Cabaret	48
Classroom	60
Cocktails	100
Dinner	80
Dinner dance	40
Hollow square	30
Lunch	80
Theatre	80
U-shape	30

Key	Symbol
Power socket	⊕
Cat 5 / IP / ISDN	▲
Audio input plate	~

Coworth Park  
*Garden and Oval Rooms*  
 Lower ground floor



Steps leading to the lower  
 Mansion House terrace and rose garden

OVAL ROOM	Metres	Feet
Area	117m <sup>2</sup>	1,259ft <sup>2</sup>
Ceiling height (highest)	3.2m	10'5"
Ceiling height (lowest)	2.66m	8'8"
Length (maximum)	14.5m	47'6"
Width (maximum)	10m	32'9"

GARDEN ROOM	Metres	Feet
Area	104m <sup>2</sup>	1,119ft <sup>2</sup>
Ceiling height (highest)	3.2m	10'5"
Ceiling height (lowest)	2.63m	8'7"
Length (maximum)	10.8m	35'5"
Width (maximum)	9.6m	31'5"

Steps leading to  
 the croquet lawn

Service