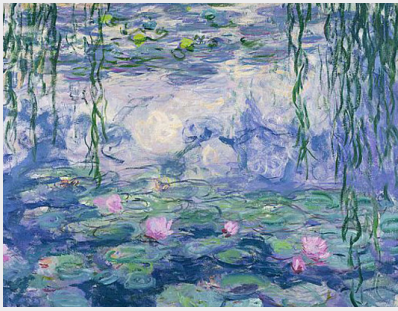


PARIS LE MEURICE

One day itinerary: **Culture**

A glowing beacon of art, design and freethinking, Paris has been home to some of the world's most revered cultural institutions for centuries. Although titans like the Louvre and the Musée d'Orsay are as unmissable now as ever, the eclectic assortment of niche museums and venues in this one-day itinerary make exploring the cultural side of Paris a real adventure.

Begin your cultural day in Paris with a visit to the Musée Marmottan Monet, 15 minutes from the hotel by taxi.



MUSÉE MARMOTTAN MONET

T: 01 44 96 50 33 | 2 Rue Louis Boilly, 75016 Paris

Located at the edge of the Bois de Boulogne, in the 16th arrondissement, this hunting lodge-turned-museum houses the largest collection of Monet paintings in the world. If that's not enough of a draw for lovers of Impressionism, notable works by contemporaries the likes of Degas, Renoir, and Gauguin also feature alongside Monet's ineffable canvases.

Then, take a 20-minute taxi ride to the Musée Rodin in the centre of Paris.



MUSÉE RODIN

T: 01 44 18 61 10 | 77 Rue de Varenne, 75007 Paris

A showcase for the works of 19th century French sculptor Auguste Rodin, this artistic landmark first opened in 1919 and now attracts nearly a million visitors every year. The museum is spread between two sites: the stunning Hôtel Biron and its surrounding grounds in the centre of Paris, and the sculptor's old home in Meudon, just outside of the city.

The Musée de Cluny is just a 15-minute taxi ride or 30 minutes' walk from the Musée Rodin.



MUSÉE DE CLUNY – MUSÉE NATIONAL DU MOYEN ÂGE

T: 01 53 73 78 00 | 6 Place Paul Painlevé, 75005 Paris

The Musée de Cluny (the National Museum of the Middle Ages) is a landmark for its rich collection of almost 1,500 medieval artworks and artefacts. Besides its Gallo-Roman baths, the institution is particularly renowned for its collection of tapestries, the highlight of which is the masterful, six-part Lady and the Unicorn series.

The next stop is the Panthéon, found 10 minutes' walk from the Musée de Cluny.



PANTHÉON PARIS

T: 01 44 32 18 00 | Place du Panthéon, 75005 Paris

Modelled after Rome's ancient Pantheon, and closely resembling St. Paul's Cathedral in London, the Panthéon Paris is the work of 18th century architect, Jacques-Germain Soufflot. The grand edifice is the resting place of a veritable who's who of French historical figures, including Marie Curie, René Descartes, Victor Hugo and, of course, the architect himself.

Then, take a taxi for the 20-minute journey to the final stop of the day, the Fondation d'Entreprise Ricard.



FONDATION D'ENTREPRISE RICARD

T: 01 53 30 88 00 | 12 Rue Boissy d'Anglas, 75008 Paris

While many Parisian museums and galleries showcase masterpieces of the past, the Fondation d'Entreprise Ricard turns its attention to burgeoning artistic talent. Located in the heart of the city, this avant-garde art gallery curates an exciting mix of contemporary work, as well as hosting discussions on philosophy, sociology and literature.

The hotel is 10 minutes' walk from the gallery.

All journey times are approximate and subject to variation.